



Module 1 – Leadership Phase 1

Life Science
Academy

An abstract graphic in the bottom right corner featuring a network of glowing blue dots connected by thin lines, set against a dark blue background with faint star-like speckles.

Core Leadership

Select a definition of
Leadership that resonates with
you.

Getting results
with/through people

To identify, recruit and
nurture people

A Leaders role is to ' know the
way, show the way and go the
way'

A Leader is responsible for ,
Oversight, Insight and
Foresight.




Leadership

“The people with whom I have been associated have worked harder, enjoyed it more, **although not always initially,** and in the end, gained increased self-respect and self confidence from accomplishing more than they previously thought possible.”

Jack Welch
CEO, General Electric





Expect change
to be messy

A great leader accepts total responsibility when things don't go well and gives credit to others when success arrives

4 Types of Leaders

- 1) The Visionary
- 2) The Custodian
- 3) The Dictator
- 4) Laissez-faire

The Visionary

- Optimist
- Big picture thinker
- Risk taker
- Great communication





The Custodian

- Methodical
- Resistant to change
- Process driven
- Stoic skills

The Dictator

- Forceful
- No input from others
- Single-minded
- Top down approach





Laissez-faire

- Let it be
- No micromanagement
- Great delegator
- Authority to others

Understand your starting point



Survival



Recovery



growth

Energy levels multiply when
you have a clear, magnified,
SPECIFIC goal.



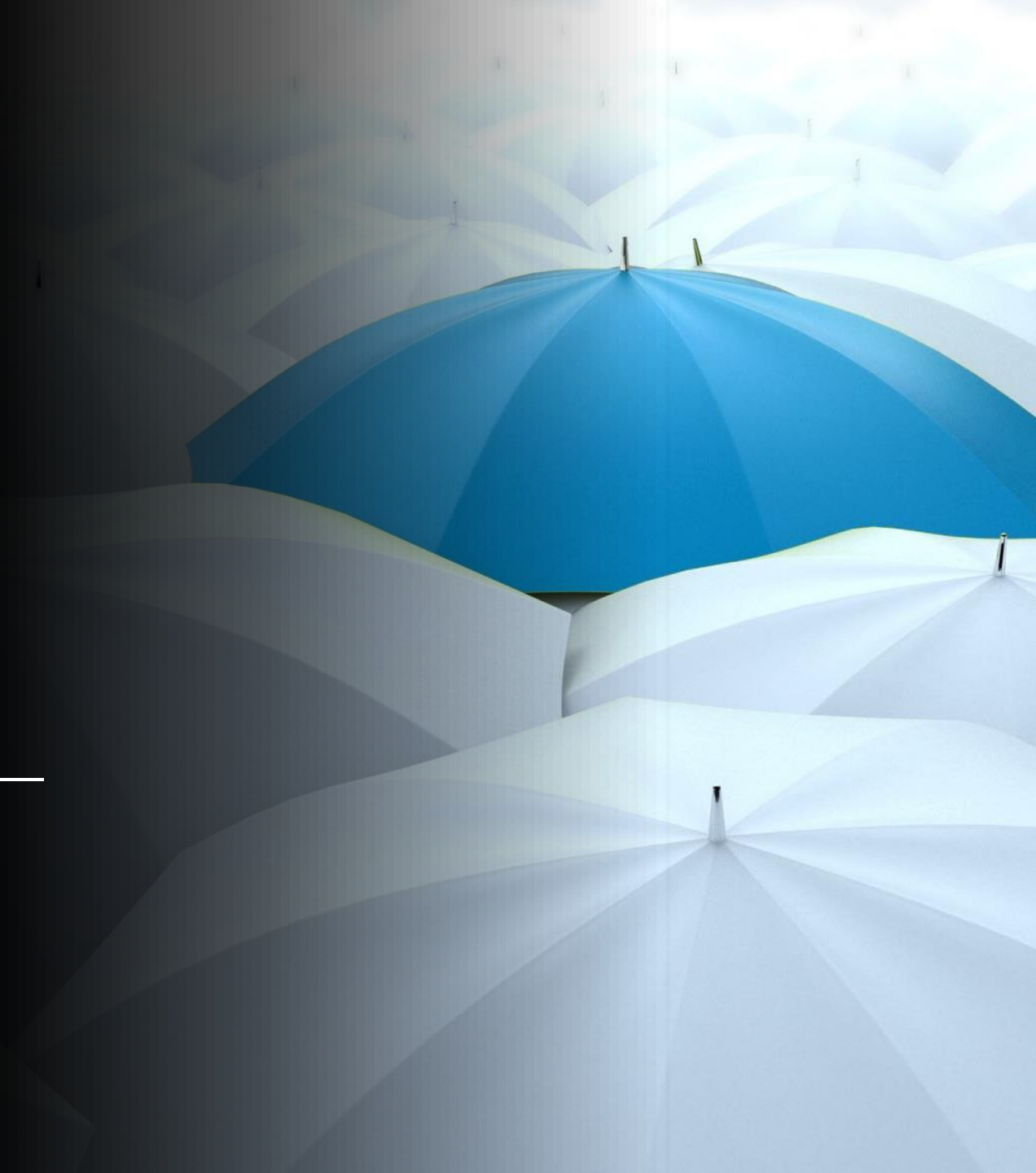
The 4 C's

- Confidence
- Conviction
- Certainty
- Clarity

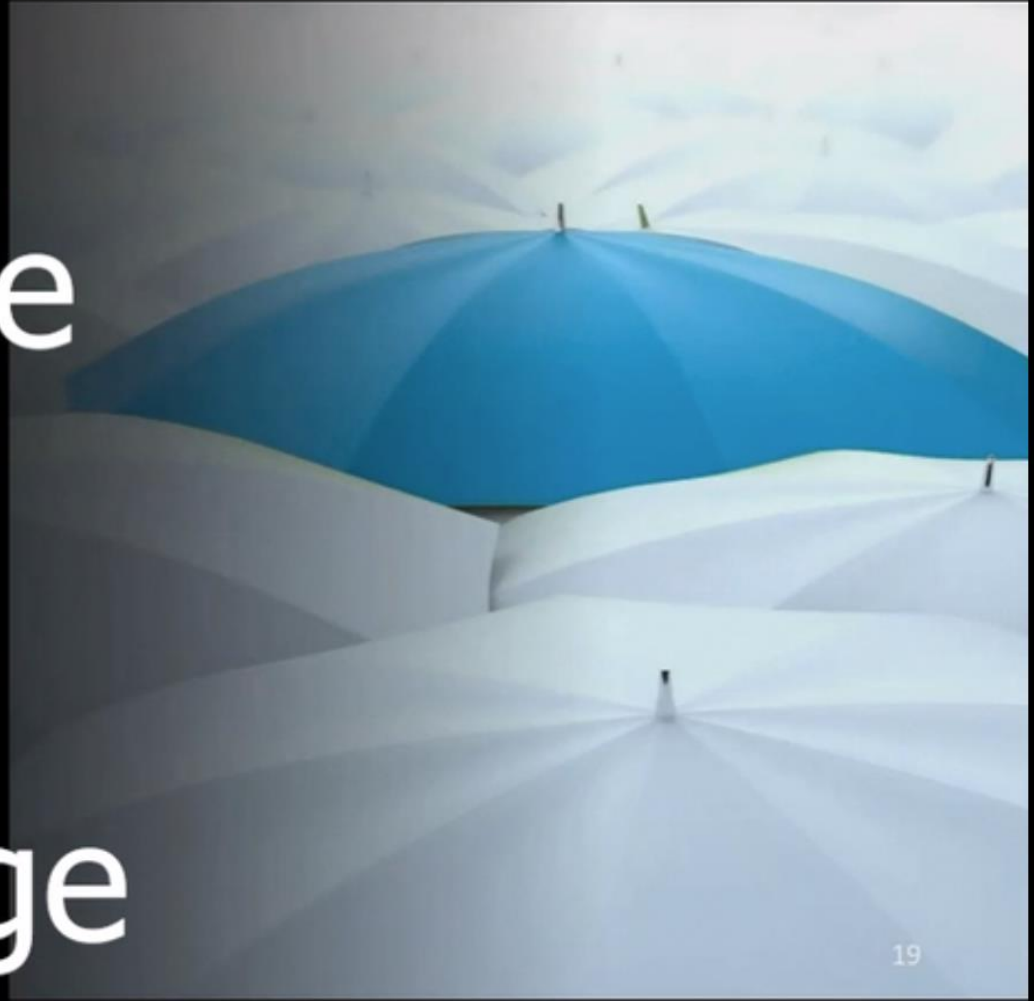




‘A great leader puts the needs of others ahead of his own’.



Inspire
Challenge
Enable
Model
Encourage





1) Understand what type of leader you are.

2) Identify your current situation.

3) Map out the destination.

4) Get the right people on the bus.

Homework